

ACO	N	DIAM (mm)	QUANT	C.UNIT (mm)	C.TOTAL (mm)
CA80	1	5.0	84	117	9728
	2	5.0	84	107	2568
CA50	1	5.0	100	77	8800
	4	8.0	4	78	312
	6	13	108	83	1608
	8	8.0	4	63	252
	7	8.0	8	390	3120
	8	543	4	434	1772
	9	8.0	4	320	1280
	10	8.0	16	98	1568
VT12	16	112	16	112	2792
	12	8.0	8	274	2192
	13	10.0	8	240	1920
	14	10.0	8	243	1132
	15	10.0	8	263	2344

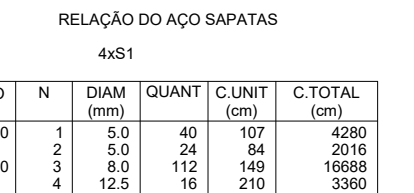
AÇO	DIAM (mm)	C.TOTAL (m)
CA50	8.0	166.7
	10.0	54
CA60	5.0	201

Volume de concreto (C-25) = 2.92 m³
Área de forma = 40.70 m²

escala 1:50

escala 1:50

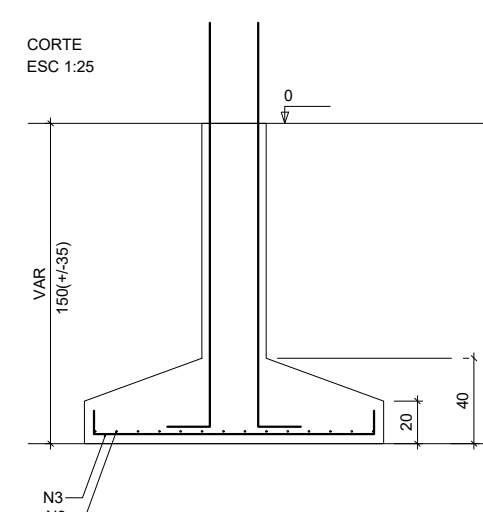
உதவி 1:50



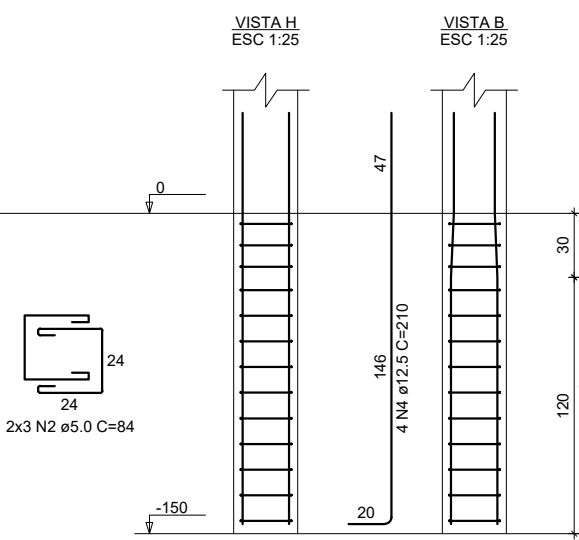
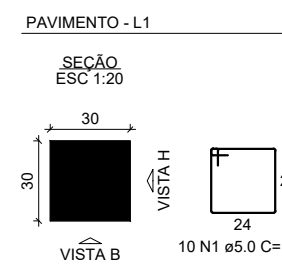
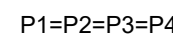
4xP1	4xS1				
AÇO	N	DIAM (mm)	QUANT	C.UNIT (cm)	C.TOTAL (cm)
CA60	1	5.0	40	107	4280
	2	5.0	24	84	2016
CA50	3	8.0	112	149	16688
	4	12.5	16	210	3360

AÇO	DIAM (mm)	C.TOTAL (m)	PESO + 10% (kg)
CA50	8,0	166,9	72,4
	12,5	33,6	35,6
CA60	5,0	63	10,7

Volume de concreto (C-25) = 2.77 m³
Área de forma = 11.68 m²

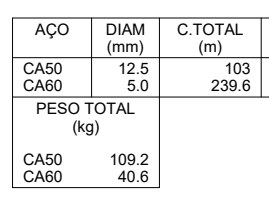
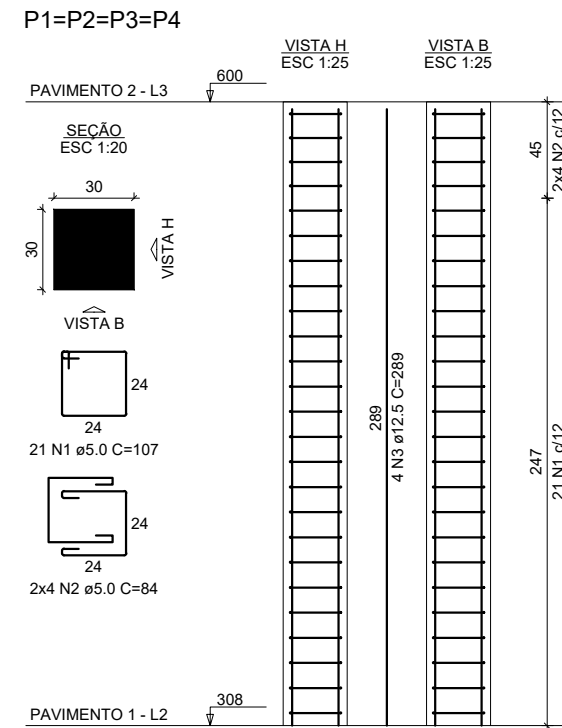


Solo com capacidade de suporte > 1.50 kgf/cm²
Solo compactado sobre a sapata

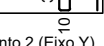
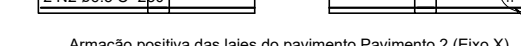
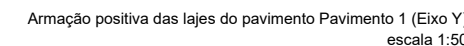
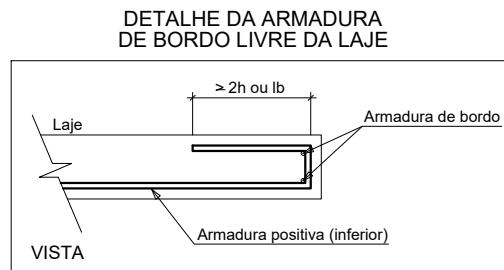


4xP1-L3		4xP1-L2			
AÇO	N	DIAM (mm)	QUANT	C.UNIT (cm)	C.TOTAL (cm)
CA50	1	5.0	180	107	19260
	2	5.0	56	84	4704
	3	12.5	16	289	4624
	4	12.5	16	355	5680

RESUMO DO AÇO		
AÇO	DIAM	C. TOTAL



Área de forma = 28.80 m²

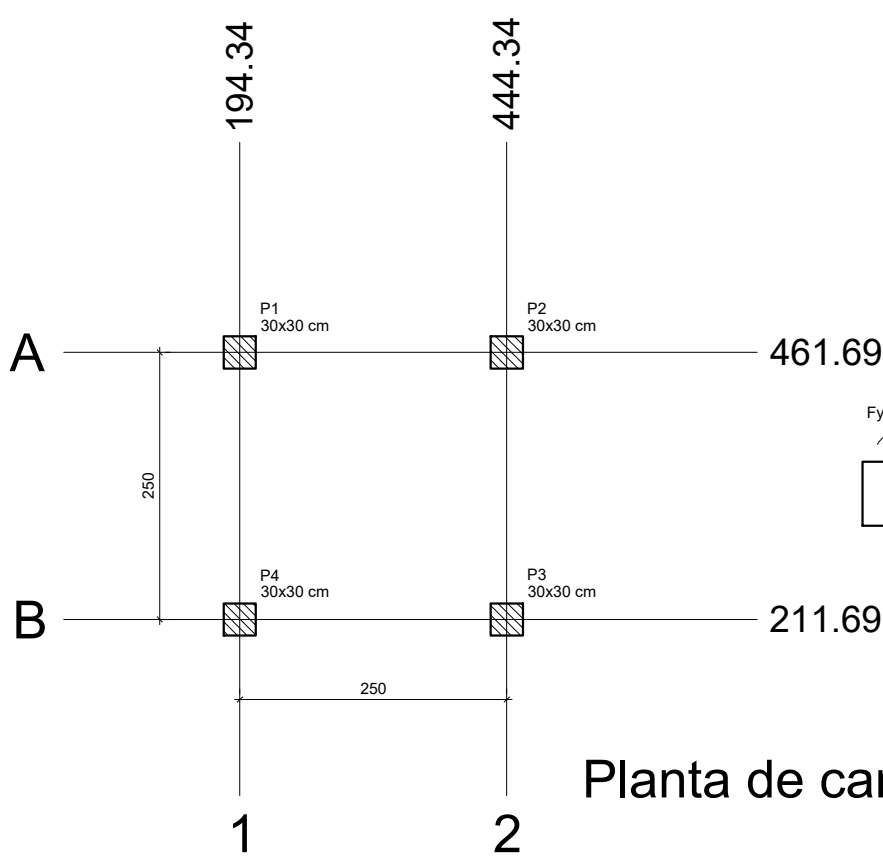
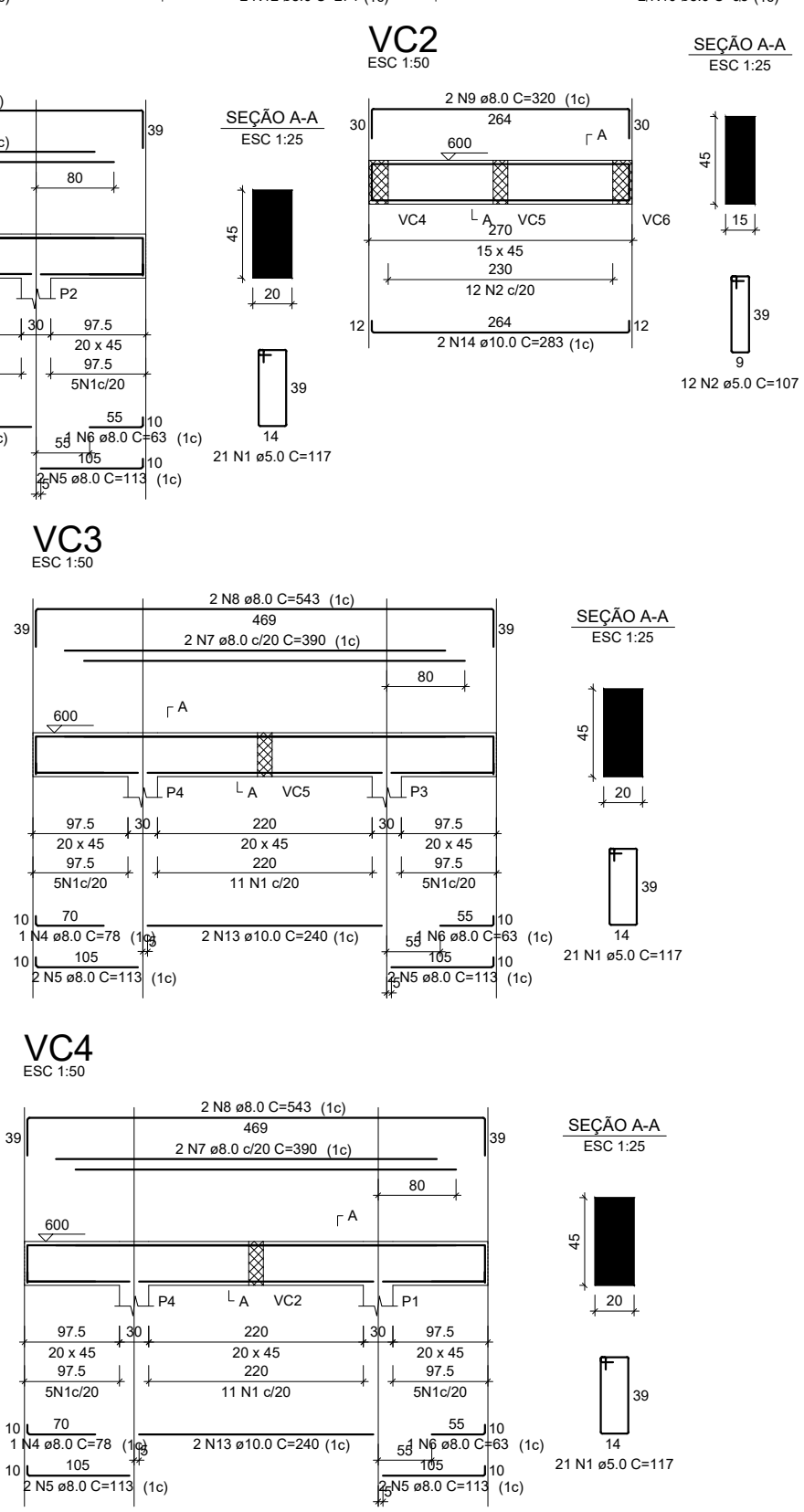


RELAÇÃO DO AÇO LAJES

Positivos X-L2		Positivos X-L2		Positivos Y-L3	
AÇO	N	DIAM (mm)	QUANT	C.UNIT (cm)	C.TOTAL (cm)
CA50	1	6.3	88	154	13552
	2	6.3	16	118	1888
	3	6.3	48	136	6528
	4	6.3	72	119	8568
	5	6.3	16	83	1328
	6	6.3	24	259	6216
	7	8.0	24	264	6336
	8	8.0	8	265	2120
	9	8.0	16	259	4144
	10	8.0	8	260	2080

AÇO	DIAM (mm)	C.TOTAL (m)	PESO + 10% (kg)
CA50	6.3 8.0	381.8 146.8	102.8 63.7
PESO TOTAL (kg)			

Volume de concreto (C-25) = 4.95 m³
Área de forma = 38.32 m²



Planta de cargas